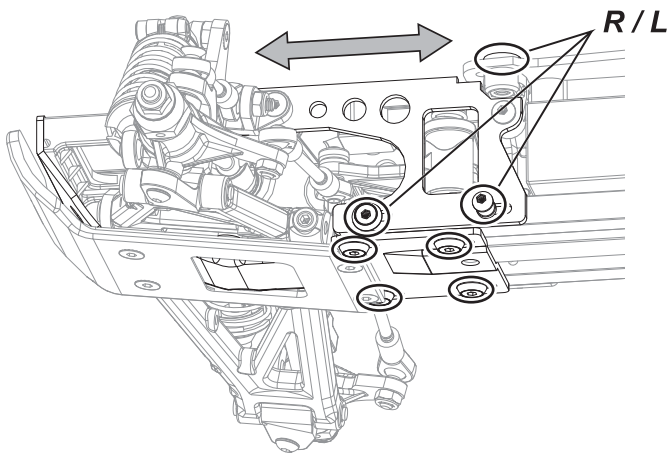


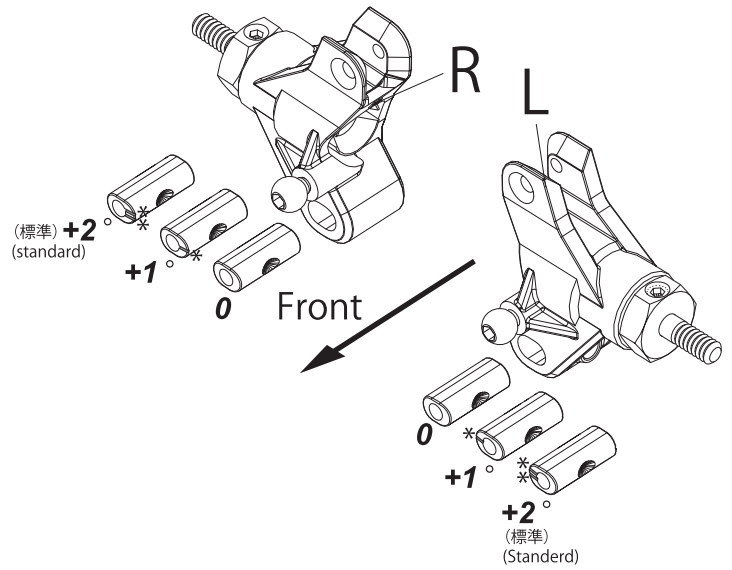
41 チェーンの調整 Adjustment of a chain

! 図のように合計10本のネジを緩め
チェーンの張りを調整します。
Chain tension can be adjusted by loosening
a total of 10 screws as shown in diagram.



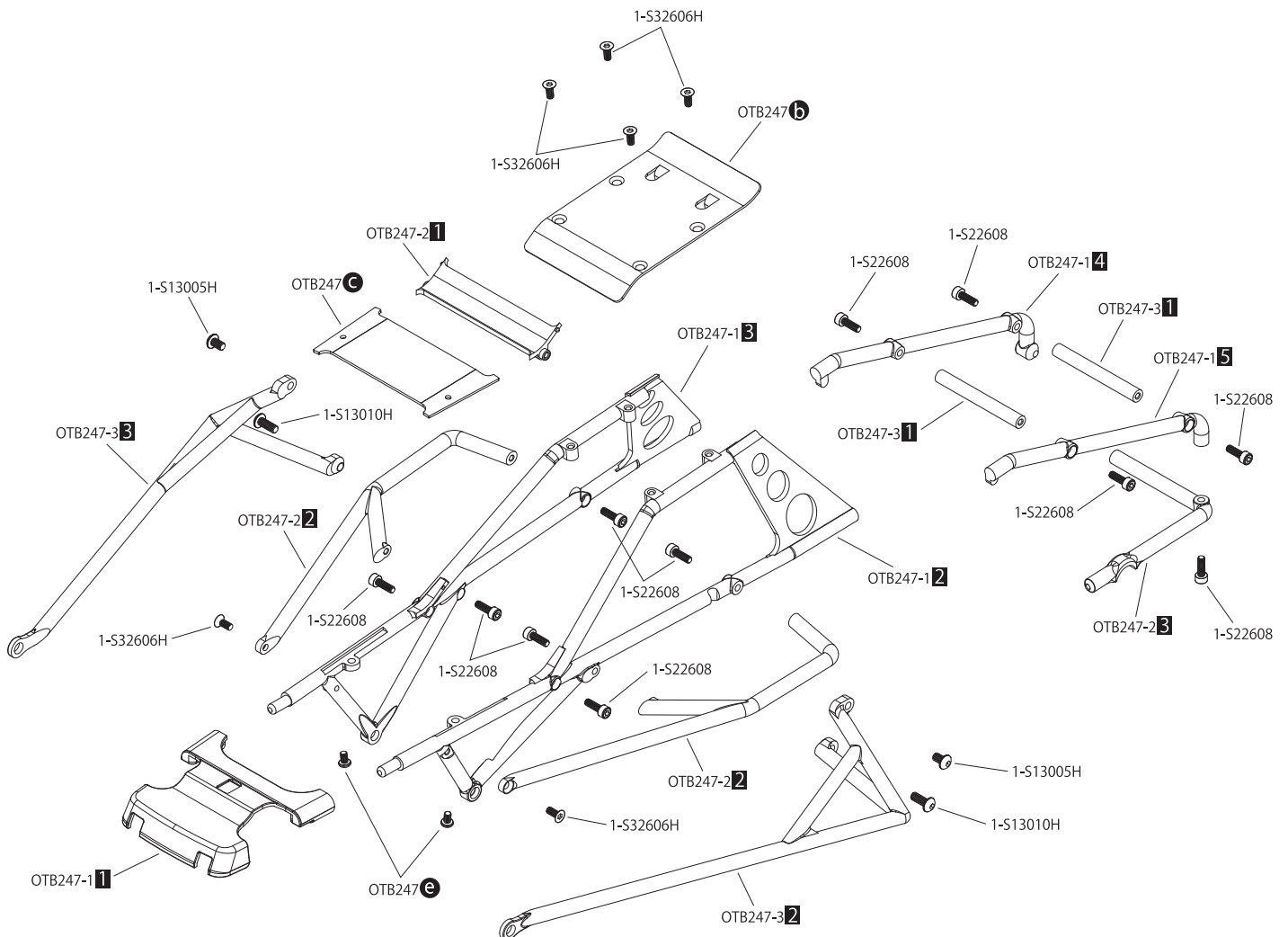
! 調整範囲を超えた場合1コマチェーンを
詰めてください。
If adjustment limit has been reached,
remove one chain.

42 リヤハブローインの調整 Rear Toe Adjustment

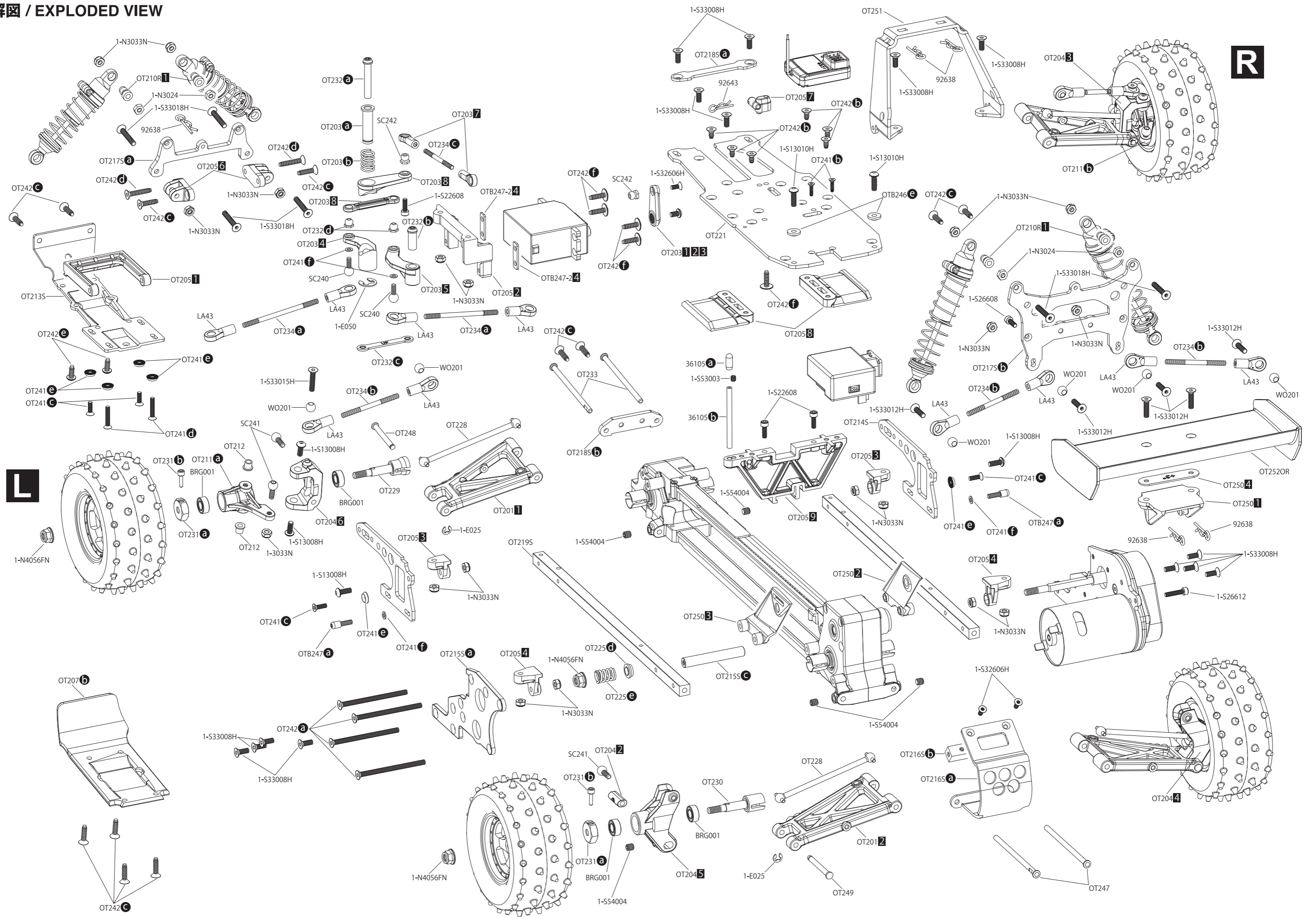


! *図のようにマークがフロント内側にセット
0ラインなし、+1度ライン1本、+2度ライン2本 (標準)
*Position with mark inside front as per diagram.
No Line: 0°, 1 Line: +°, 2 Line: +2°

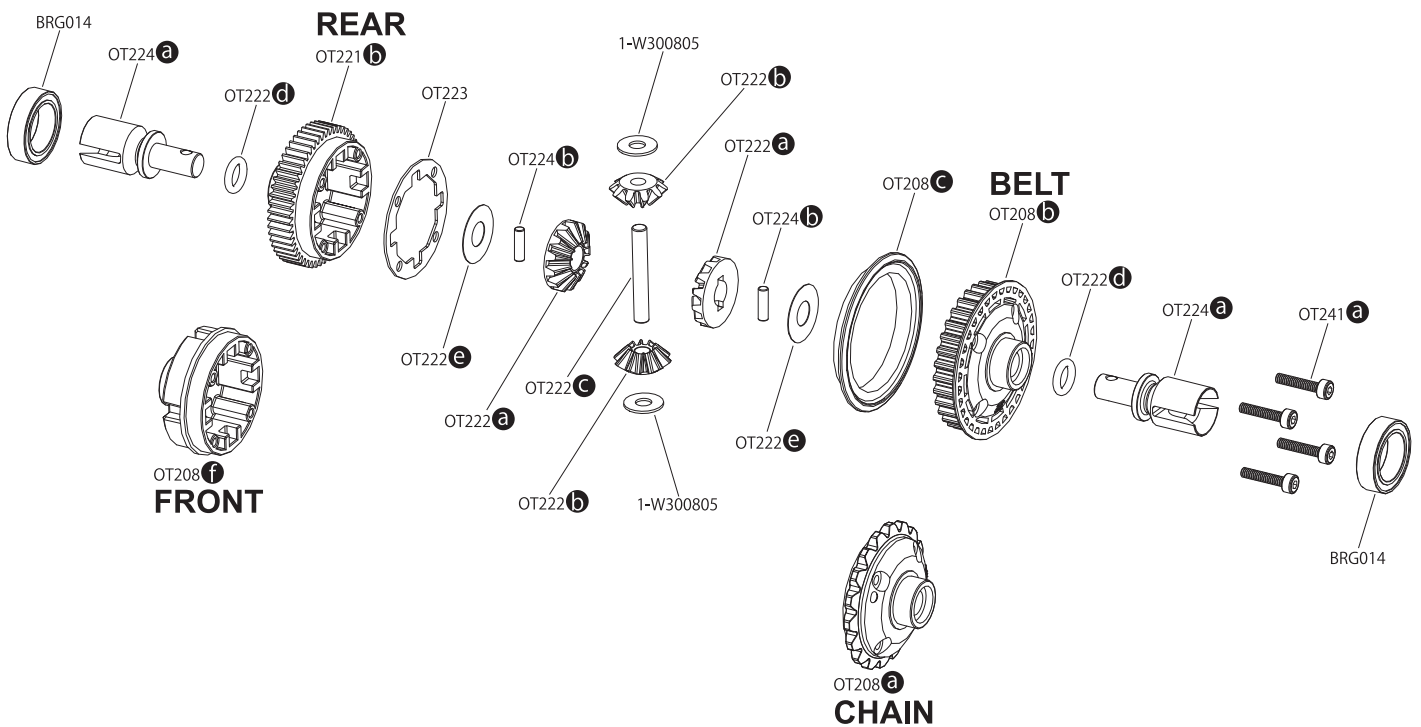
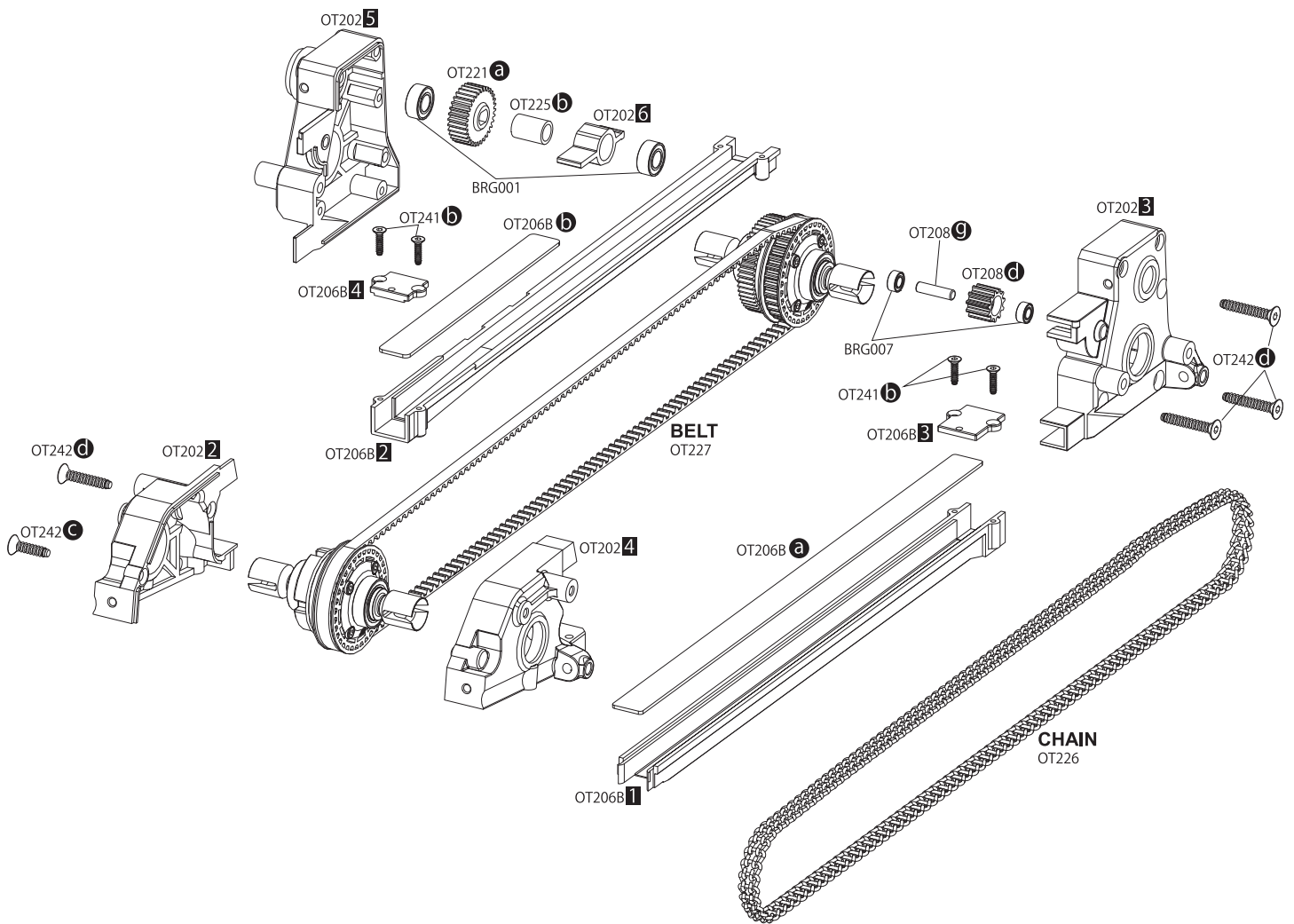
分解図 / EXPLODED VIEW

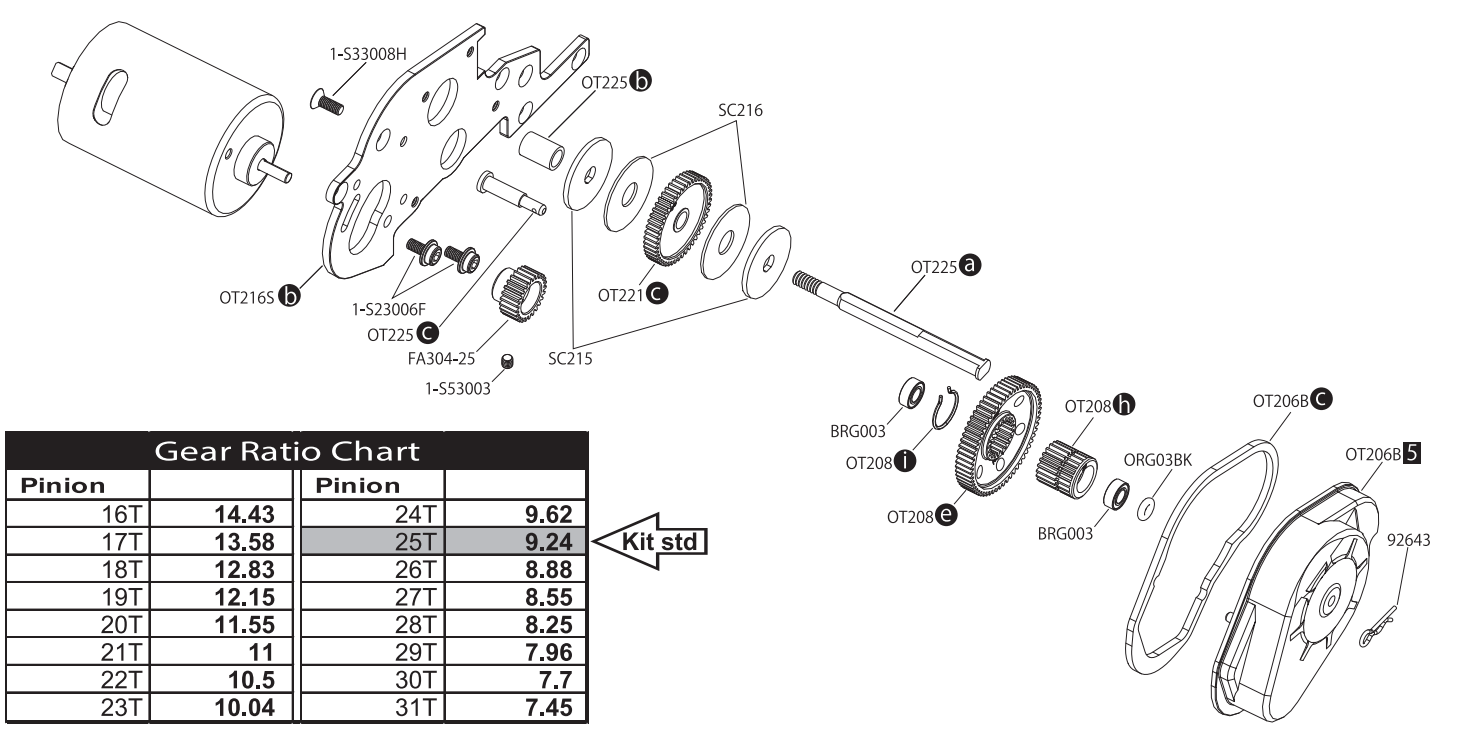
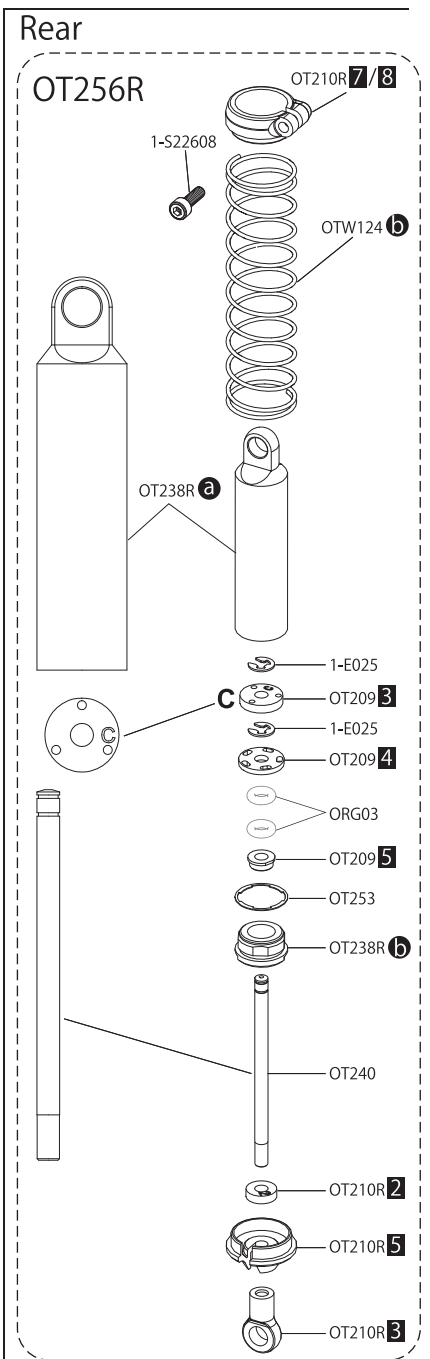
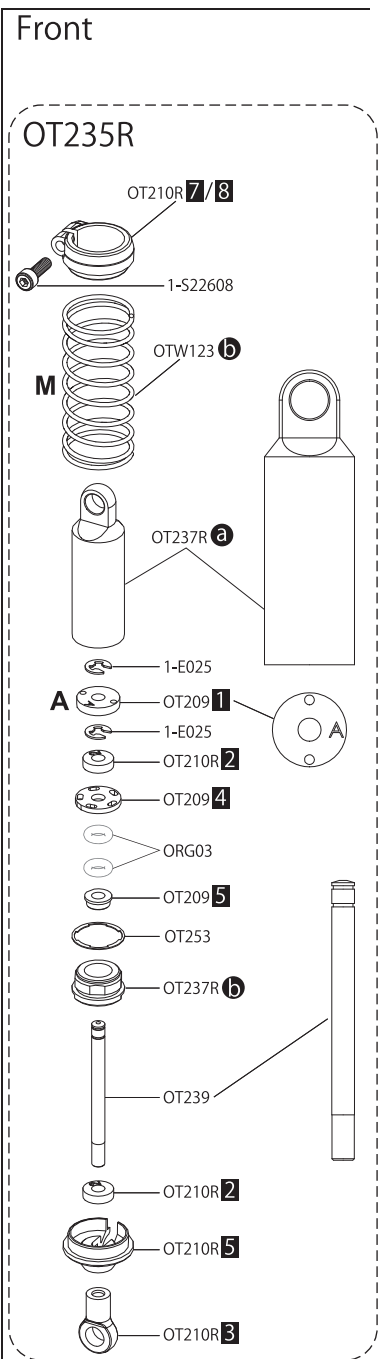
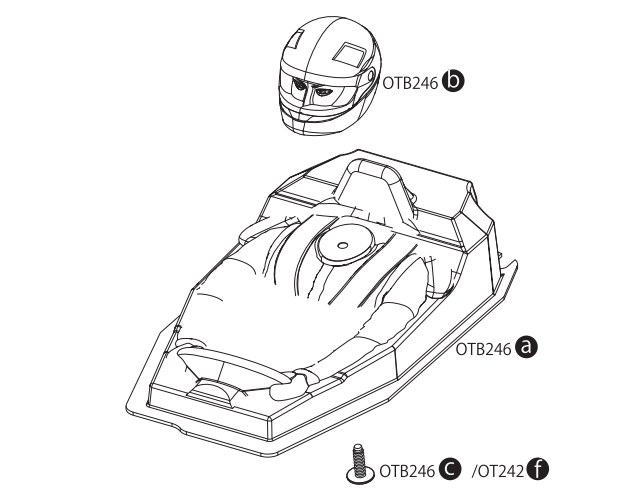
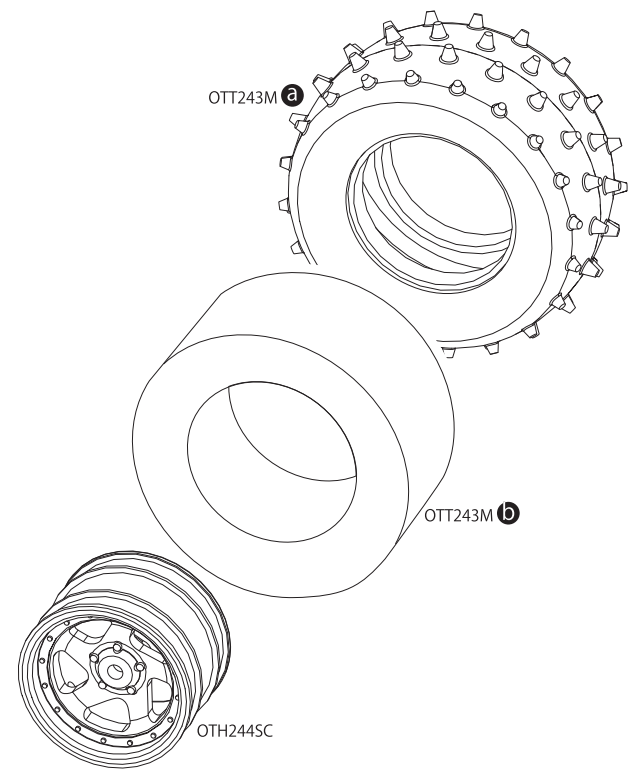


分解图 / EXPLODED VIEW



分解图 / EXPLODED VIEW





Pinion		Pinion	
16T	14.43	24T	9.62
17T	13.58	25T	9.24
18T	12.83	26T	8.88
19T	12.15	27T	8.55
20T	11.55	28T	8.25
21T	11	29T	7.96
22T	10.5	30T	7.7
23T	10.04	31T	7.45

Kit std